

Ampacoll® BKF



Butyl rubber window installation tape



- ▶ Asymmetrically-divided liner for quick, clean installation. Slimmer side at the window frame, wider side in the reveal
- ▶ Optimum width for window insertion
- ▶ Fleece can be plastered-over

internal

Ampacoll® BKF in window and masonry joints



Roll dimensions

Length: 25 m / Width: 80 mm / Thickness: 1 mm

Box contents

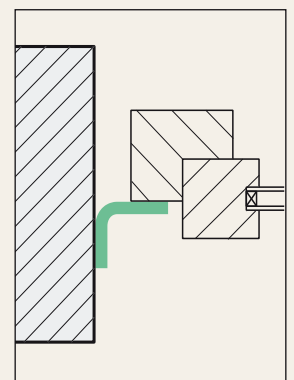
2 rolls = 50 m¹

Pallet details

40 boxes = 2'000 m¹

Technical details:


Storage time	2 years
Storage conditions	cool and dry
Working temperature range	above 0 °C
Temp. withstand range	-40 to +90 °C



10

Jahre Garantie*
Ans Garantie
Anni Garanzia
Years Warranty

* Security is part of the system at Ampack. We cover the cost of removal and replacement, and consequential damage, as well as the replacement materials.

 ISO 9001:2008
Swiss Research



Optimized for use with the following materials:

- ▶ Planed wood
- ▶ Raw wood *
- ▶ Wood fibreboard, soft to hard *
- ▶ OSB *
- ▶ Particleboard *
- ▶ Drywall *
- ▶ Plasterboard *
- ▶ Concrete (rough and smooth*)
- ▶ Brick *
- ▶ Plaster, mortar, gypsum etc. *
- ▶ Metals (aluminum, steel, etc.)
- ▶ PE components (e.g., paneling)
- ▶ PVC components (e.g., windows)
- ▶ Bitumen, sanded paths *

* Use primers

Product description

On one side there is a stable fleece that can be plastered over. On the other, the entire surface of the tape consists of butyl rubber, ideal for bonding to rough surfaces. The paper liner is divided asymmetrically, making installation both quick and clean. The narrower side should be positioned against the window, with the wider side against the reveal.

80 mm x 1 mm = matching width: 30 + 30 + 20 mm = left side + seam + right side

Ampacoll® BKF is very easy to form, malleable and vapor tight.

System for sealing windows

Bonding internally: **Ampacoll® FE** , **Ampacoll® F** or **Ampacoll® BKF**

Bonding externally: **Ampacoll® XT** – Meets the requirement for «the inside to be better sealed than the outside».

Application

- Installation of windows in masonry and concrete
- Vapor- and air-tight internal bonding in corners without settling, can be worked without cutting
- Junctions between timber and masonry (perimeter slab and timber wall, where rafters, beams and purlins penetrate, working piece by piece).
- Joining a vapor barrier to walls that are to be plastered later
- Rough, dusty or dirty surfaces should be pretreated with **Ampacoll® Primer 531** or **Ampacoll® Connecto**